

# Online Climate Education for Extension Agents Using Wimba

Joel O. Paz<sup>1</sup>, Pam N. Knox<sup>1</sup>, Megan McClure<sup>2</sup> and Gerrit Hoogenboom<sup>1</sup>

<sup>1</sup>Department of Biological and Agricultural Engineering, The University of Georgia

<sup>2</sup>Department of Agricultural Leadership, Education and Communication, The University of Georgia



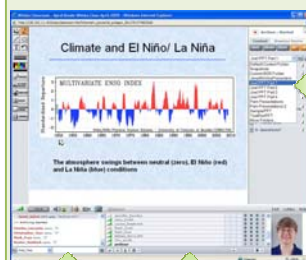
## AgroClimate Training

- ▶ AgroClimate training is an essential component of the Southeast Climate Consortium (SECC) Extension program.
- ▶ These workshops conducted in different locations in SECC states (Alabama, Florida, Georgia, and North Carolina), provide county agents basic information on climate and El Niño/La Niña, and hands-on use of AgroClimate ([www.agroclimate.org](http://www.agroclimate.org)) web tools.



## What is Wimba?

- ▶ Wimba classroom is a flexible, web-based tool for conducting live online classes that can be archived and viewed at a later time.
- ▶ It provides an interactive learning environment for Extension Specialists and County Agents.
- ▶ Wimba offers other options:
  - Shared whiteboard for instructors and students to show PowerPoint, draw diagrams or display images
  - Shared screen to demonstrate computer programs or web sites to each other
  - Ability for group members to take turns to edit a single document.



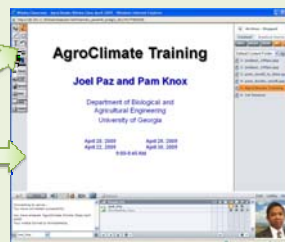
Presentation folders are listed here.

Participants can exchange text messages.

The list of participants is shown here.

Wimba provides full annotation tools.

The whiteboard is used to share notes.



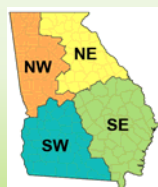
Using Wimba's AppShare feature, an instructor's computer desktop can be shared with the participants.

The Wimba classroom allows instructors in different locations to collaborate in the same session. The pictures below show Joel Paz (left) and Pam Knox (right) conducting the AgroClimate online class via Wimba.



## Cooperative Extension

- ▶ Cooperative Extension agents, in county offices across Georgia, provide a link between the University and the public. The 159 counties of Georgia are divided into four Cooperative Extension districts.



- ▶ Extension personnel work in UGA county-based offices throughout the state, all of whom regularly get trained to keep their skills current.

## Online Trainings

- ▶ By holding training sessions online, extension professionals can overcome common constraints such as limited travel budgets, rising fuel costs, and time spent away from county offices and local clientele.
- ▶ Future online AgroClimate training sessions can be opened up to extension agents in other states and to the public by setting up unrestricted access on Wimba.
- ▶ Wimba classroom provides an exciting avenue for rapid implementation of climate extension trainings and public outreach activities.